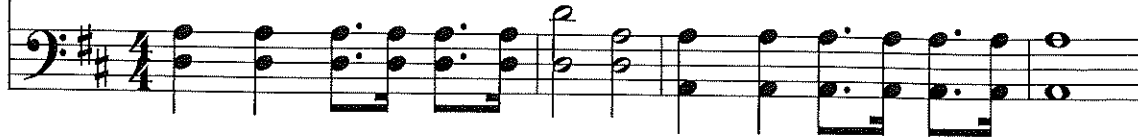


375 Shall We Gather at the River



1 Shall we gath-er at the riv-er, where bright an-gel feet have trod,
 2 On the mar-gin of the riv-er, wash-ing up its sil-ver spray,
 3 Ere we reach the shin-ing riv-er, lay we ev-ery bur-den down;
 4 Soon we'll reach the shin-ing riv-er; soon our pil-grim-age will cease;



with its crys-tal tide for-ev-er flow-ing by the throne of God?
 we will walk and wor-ship ev-er, all the hap-py gold-en day.
 grace our spir-its will de-liv-er, and pro-vide a robe and crown.
 soon our hap-py hearts will quiv-er with the mel-o-dy of peace.



Refrain



Yes, we'll gath-er at the riv-er, the beau-ti-ful, the beau-ti-ful riv-er;



gath-er with the saints at the riv-er that flows by the throne of God.



A Baptist pastor wrote this hymn while seated at his parlor organ. Created as an alternative to gloomy "river of death" hymns, it is a celebration of the "pure river of water of life, clear as crystal, proceeding out of the throne of God and of the Lamb" (Revelation 22:1 KJV).

I'LL FLY AWAY

Words and Music by
ALBERT E. BRUMLEY

Slowly, with expression fast and lively

The piano introduction consists of two systems of music. The first system is marked 'Slowly, with expression' and features a melody in the right hand and a bass line in the left hand. The second system is marked 'fast and lively' and continues the melody and bass line with a more rhythmic feel. The music is in 4/4 time and begins with a mezzo-forte (mf) dynamic.

F

Verse

A7

Some glad morn - ing when this life is o'er, —
Just a few more wea - ry days and then, —

The first verse of the song is presented with vocal melody and piano accompaniment. The piano part features a steady accompaniment with chords and moving lines in both hands. The lyrics are: "Some glad morn - ing when this life is o'er, — Just a few more wea - ry days and then, —".

Bb

Gm7

Bb

F

Gm7

C

F

I'll fly a - way. To a home on
I'll fly a - way. To a land where

The second verse of the song is presented with vocal melody and piano accompaniment. The piano part continues with the same accompaniment style as the first verse. The lyrics are: "I'll fly a - way. To a home on I'll fly a - way. To a land where".

A Dm7 Gm9 C7 F B7 F C7

God's ce - les - tial shore, I'll fly a - way.
 joy shall nev - er end, I'll fly a - way.

F C F F+7 Bb Gm7 Bb

Chorus

I'll fly a - way, O glo - ry, I'll fly a -

F Gm7 C F Bb F Gm7 F A Dm Bbm

way. When I die, hal - le - lu - jah, by and by, Oh —

F C7 1 F Bb F C 2 F Bb F

I'll fly a - way. way.

Do Lord

Spiritual

Trad.

arr: Jan Wolters

Bright

Piano

Guitar

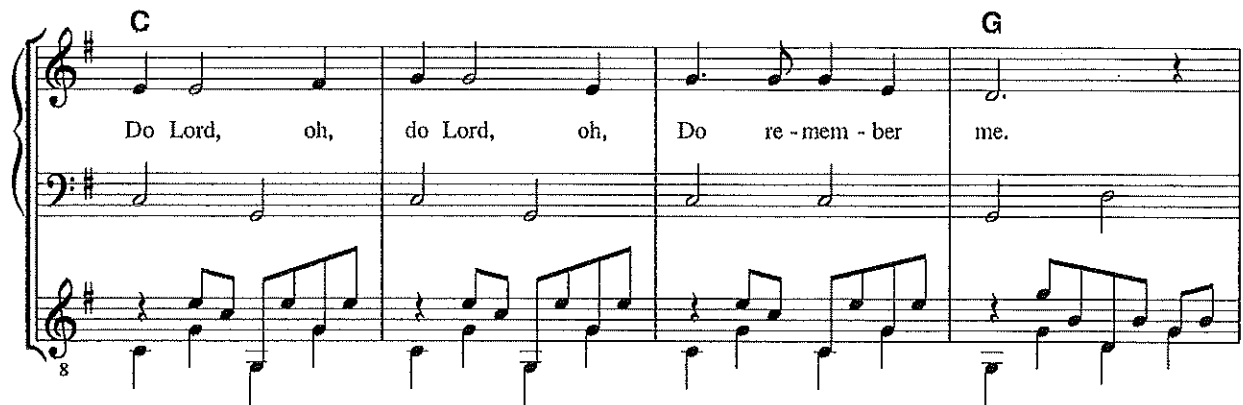
G **G7**

Do Lord, Oh, Do Lord, Oh, Do re-mem-ber me



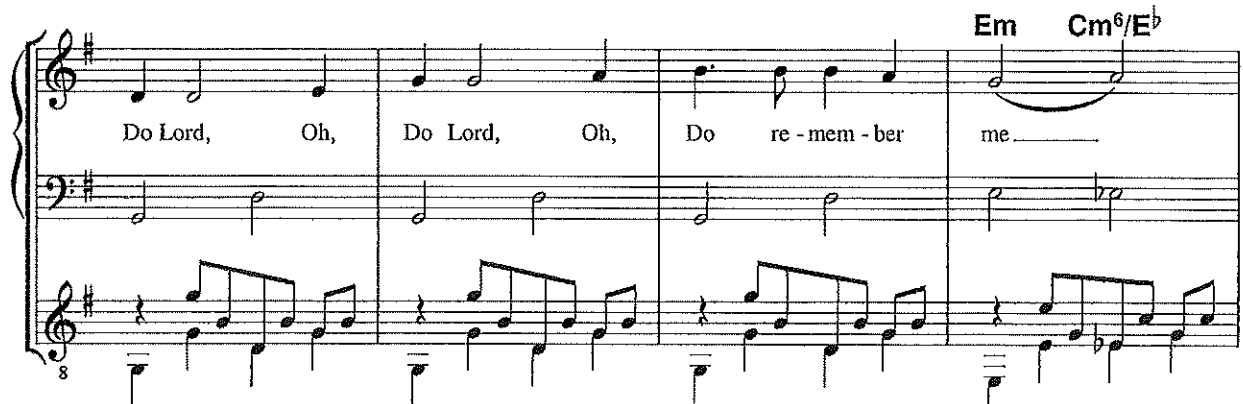
C **G**

Do Lord, oh, do Lord, oh, Do re-mem-ber me.



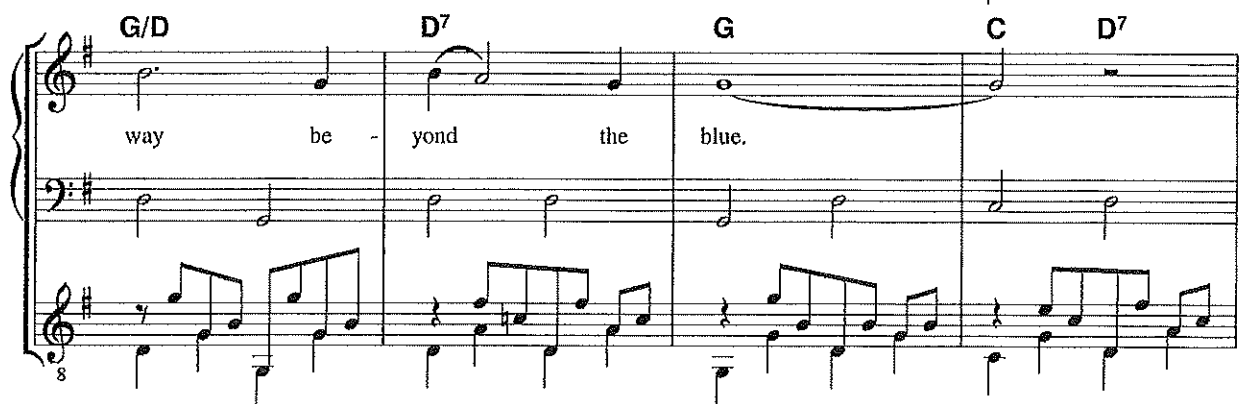
Em Cm6/Eb

Do Lord, Oh, Do Lord, Oh, Do re-mem-ber me.



G/D D7 G C D7

way be-yond the blue.



G **G7**

I've got a home in Glo - ry - land that out - shines the sun,

C **G**

I've got a home in Glo - ry - land that out - shines the sun,

Em Cm⁶/E^b

I've got a home in Glo - ry - land that out - shines the sun, ———

G **D7** **G** **C** **D7**

way be - yond the blue.

G **G7**

Do Lord, Oh, Do Lord, Oh, Do re - mem - ber me

C **G**

Do Lord, oh, do Lord, oh, Do re - mem - ber me.

Em Cm⁹/E^b

Do Lord, Oh, Do Lord, Oh, Do re - mem - ber me

G **D7** **G** **C** **G**

way be - yond the blue.

Down to the River to Pray

Traditional
arr. Sheldon Curry

As I went down to the ri-ver to pray, stu-dy-ing ab-out that good ol' way. And who shall

wear the star-ry crown? Good Lord, show me the way! Oh, sis-ters, let's go down,

let's go down, come on down. Oh, sis-ters, let's go down, down to the riv-er to pray.

As I went down to the river to pray,
studying about that good ol' way
And who shall wear the robe and crown?
Good Lord, show me the way.

Oh, brothers, let's go down,
let's go down, come on down.
Come on, brothers, let's go down,
down to the river to pray.

As I went down to the river to pray,
studying about that good ol' way.
And who shall wear the starry crown?
Good Lord, show me the way.

Oh, fathers, let's go down,
let's go down. Don't you wanna go down?
Oh, fathers, let's go down,
down to the river to pray.

As I went down to the river to pray,
studying about that good ol' way.
And who shall wear the robe and crown?
Good Lord, show me the way.

Oh, mothers, let's go down,
let's go down, come on down.
Come on, mothers, let's go down,
down to the river to pray.

As I went down to the river to pray,
studying about that good ol' way.
And who shall wear the starry crown?
Good Lord, show me the way.

Oh, sinners, let's go down,
let's go down, come on down.
Oh, sinners, let's go down,
down to the river to pray.

As I went down to the river to pray,
studying about that good ol' way.
And who shall wear the starry crown?
Good Lord, show me the way.

LOVE LIFTED ME

Words by JAMES ROWE
 Music by HOWARD E. SMITH

Moderately fast

E \flat B \flat B \flat /F F7 B \flat B \flat

I was sink - ing
 All my heart to
 Souls in dan - ger,

F7

deep in sin, Far from the peace - ful shore, Ver - y deep - ly stained with - in,
 Him I give, Ev - er to Him I'll cling, in His bless - ed pres - ence live,
 look a - bove Je - sus com - plete - ly saves, He will lift you by His love

B \flat B \flat /D

Sink - ing to rise no more; but the Mas - ter of the sea Heard my de - spair - ing
 ev - er His prais - es sing; Love so might - y and so true Mer - its my soul's best
 Out of the an - gry waves; He's the Mas - ter of the sea, Bil - lows His will o -

E \flat Ebm B \flat E \flat B \flat /F F7 B \flat

cry, From the wa - ters lift - ed me; Now safe am I.
 songs; Faith - ful, lov - ing serv - ice, too To Him be - longs.
 bey; He your Sav - ior wants to be, Be saved to - day.

B \flat F7 B \flat E \flat /B \flat B \flat E \flat G7 Cm E \flat

Love lift - ed me! Love lift - ed me! When noth - ing

B \flat C F7 B \flat F7 B \flat E \flat /B \flat B \flat

else could help, Love lift - ed me. Love lift - ed me!

E \flat G7 Cm E \flat B \flat B \flat /F F7 B \flat

Love lift - ed me! When noth - ing else could help, Love lift - ed me.

No One Will Ever Be the Same

Departing

Words and Music by
The Iona Community
Tune: *Roystonhill* (JLB)



1. We're going to shine like the sun in the
2. We're going to learn from the poor in the
3. We're going to walk with the weak in the
4. We're going to drink new _ wine in the
5. And _ it all starts _ now in the



King-dom of Heav - en, shine like the sun in the
King-dom of Heav - en, learn from the poor in the
King-dom of Heav - en, walk with the weak in the
King-dom of Heav - en, drink new _ wine in the
King-dom of Heav - en, all starts now in the



King-dom of Heav-en; we're going to shine like the sun in the
King-dom of Heav-en, we're going to learn from the poor in the
King-dom of Heav-en, we're going to walk with the weak in the
King-dom of Heav-en, we're going to drink new _ wine in the
King-dom of Heav-en, and it _ all starts now in the



King-dom of Heav - en and no one will ev - er be the same.
King-dom of Heav - en and no one will ev - er be the same.
King-dom of Heav - en and no one will ev - er be the same.
King-dom of Heav - en and no one will ev - er be the same.
King-dom of Heav - en and no one will ev - er be the same.

Words and music © 1988 The Iona Community.
All rights reserved.

Used by permission of G.I.A. Publications, Inc., Chicago, Illinois.

Am7 Bm7 G Am7 Bm7

And it's all in Je - sus' name; and it's

Em7 Am7 D7 G Am7 Bm7

all in Je - sus' name; yes it's all in Je - sus'

G Am7 Bm7 Am7 D7 G C/G G

name that no one will ev - er be the same.